



# Bangor Regatta 2024

## Royal Ulster Yacht Club

### Thursday 27th to Sunday 30th June 2024

## SAILING INSTRUCTIONS

### Organising authority

This event will be organised by Royal Ulster Yacht Club (RUYC). The notation '[NP]' in a rule of the sailing instructions (SIs) means that a boat may not protest another boat for breaking that rule. This changes RRS 60.1(a)

#### 1. RULES

- 1.1. The event is governed by the rules as defined in *The Racing Rules of Sailing*.
- 1.2. Racing rules Race Signals AP, 33, 34, 60.1(a), 60.1(b), 61.3, 62.1(a), 62.2, A2 A5.1 and A5.2 will be changed. The changes appear, in full, in this notice of race or in the sailing instructions. The sailing instructions may also change other racing rules.
- 1.3. The Sailing Instructions take precedence where they conflict with the Notice of Race.

#### 2. CHANGES TO SAILING INSTRUCTIONS

Any change to the sailing instructions will be posted before 0900 on the day it will take effect, except that any change to the schedule of races will be posted by 2000 on the day before it will take effect.

#### 3. COMMUNICATIONS WITH COMPETITORS

3.1 Notices to competitors will be posted on the Official Notice Board located on <https://www.racingrulesofsailing.org> . Other non-racing event information will be at <https://www.bangorregatta.com/>. Competitors will also be advised on the Race Committee intentions on the event WhatsApp .



3.2 An online system that will enable paperless submissions of hearing requests, scoring enquiries and declarations will be accessible on <https://www.racingrulesofsailing.org> . In case of a problem with the online system, for hearing requests and other submissions, boats shall contact the Race Office at Bangor Marina.

3.3 A briefing of competitors will be held at 10.30 on 27<sup>th</sup> June 2024 at Bangor Marina

3.4 On the water the RC will communicate with competitors on VHF 72. These transmissions are advisory only and will not be grounds for redress. This changes RRS 62.1(a).

#### 4. CODE OF CONDUCT

[DP] Competitors and support persons shall comply with reasonable requests from race officials.

#### 5. SIGNALS MADE ASHORE

5.1. Signals made ashore will be displayed at a flagpole at Bangor Marina.

5.2. When flag AP is displayed ashore, '1 minute' is replaced with 'not less than 60 minutes' in Race Signals AP. This changes race signals AP.

#### 6. SCHEDULE OF RACES

Date	Classes 2-3	Class 4	Class 5 & 6
Thurs 27th June	Races 1,2 and 3	Races 1, 2 and 3	Race 1
Fri 28th June	Race 4 + Race 5 (Coastal	Race 4,5 and 6	Race 2
Sat 29th June	Race 6,7 and 8	Race 7 ,8 and 9	Race 3
Sun 30th June	Race 9 and 10	Race 10 and 11	Race 4

6.1. The intention of the RC is to start the classes in the following order 5, 6, 2,3,and 4. The first warning signal on Thursday will be at 11.55 & 10.25 for the remainder of the regatta. After each start the intention is that the warning signal for subsequent starts will be 1 minute after the preceding start.

6.2. On the last day there will be no warning signal after 13.30

6.3. To alert boats that a race or sequence of races will begin soon, the orange starting line flag will be displayed with one sound signal at least five minutes before a warning signal is made.

#### 7. CLASS FLAGS AND COURSE AREA

Class 2	Boats with IRC TCC from 1.000 and above (incl. RC35). This Class has been altered see NOR 4.2	Numeral 2
Class 3	Boats with IRC TCC 0.999 and below	Numeral 3
Class 4	Sigma OOD 33 Class/Impala/One Design Class	Numeral 4
Class 5	Coastal Class IRC & YTC	Numeral 5
Class 6	Coastal Class YTC Restricted Sail	Numeral 6

#### 8. RACING AREA

8.1. The position of the course area will be outlined at the briefing and communicated on WhatsApp.

#### 9. COURSES

9.1. Courses to be sailed for Classes 1 to 4 will be Windward Leeward or Triangle (no triangle for Class 4). The diagrams in Addendum A show the courses, the order in which marks are to be passed and the side on which each mark is to be passed.

9.2. Courses for Classes 5 and 6 will be coastal. See Addendum B

9.3. The courses to be sailed will be indicated by boards on the side of the committee signal vessel.

#### 10. MARKS

10.1. Except the coastal race, marks 1, 1A, 4S and 4P will be round yellow inflatables, marks 2 and 2A will be round yellow inflatables with a horizontal black stripe. The start mark will be a round green inflatable, the finish mark will be a round red inflatable .

10.2. When a gate mark is used, if one or other of the gate marks is missing, the remaining mark shall be rounded to port. This changes RRS 34.

## **11. THE START**

- 11.1. The starting line will be between a staff displaying an orange flag on the starting mark at the starboard end and the course side of the port end starting mark.
- 11.2. A boat that does not start within 5 minutes after her starting signal will be scored Did Not Start without a hearing. This changes RRS A5.1 and A5.2.

## **12. CHANGE OF THE NEXT LEG OF THE COURSE**

- 12.1. To change the next leg of the course, the race committee will use a red change mark. When mark 1 or mark 2 has been changed the offset marks (1A & 2A) will no longer be a mark on the course for the classes the course has been changed for.
- 12.2. Minor course changes may not be signalled. This changes RRS 33.

## **13. THE FINISH**

- 13.1. The finishing line for windward leeward and triangle races will be between a staff displaying a blue flag on the committee boat at the starboard end and the course side of the port-end finishing mark.
- 13.2. The finishing line for coastal races will be RUYC battery finishing line which is between a white pole on shore with a white X top mark and a red buoy.

## **14. PENALTY SYSTEM**

- 14.1. Appendix T will apply.

## **15. TIME LIMIT**

- 15.1 The time limit for all windward leeward and triangle races fleets is 90 minutes.
- 15.2 The time limit for coastal races is 18.00. In windward leeward and triangle races, the finishing window is 20 minutes after the first finisher.
- 15.3 Boats failing to make the time limit in the coastal race or in the finishing window and not subsequently retiring, penalized or given redress, will be scored Time Limit Expired (TLE) without a hearing. A boat scored TLE shall be scored points for the finishing place one more than the points scored by the last correct finisher in their Class. This changes RRS 35, A5.1 and A5.2 and A10

## **16. HEARING REQUESTS**

- 16.1 The protest time limit is 90 minutes after the last boat on their course has finished the last race of the day or the race committee signals no more racing today, whichever is the later. This changes RRS 61.3 and 62.2.
- 16.2 Hearing requests will be online using the Racing Rules of Sailing.Org app.
- 16.3 Notices will be posted no later than 30 minutes after the protest time limit to inform competitors of hearings in which they are parties or named as witnesses.
- 16.4 Hearings will be held in the protest room at RUYC.

## **17. SCORING**

As per NoR 15

## **18. SAFETY REGULATIONS**

[DP] [NP] A boat that retires from a race shall notify the race committee as soon as possible.

## **19. REPLACEMENT OF CREW OR EQUIPMENT**

- 19.1 [DP] [NP] Substitution of competitors is not allowed without prior written approval of the race committee.
- 19.2 [DP] [NP] Substitution of damaged or lost equipment is not allowed unless authorised by the race committee. Requests for substitution shall be made at the first reasonable opportunity.

## **20. EQUIPMENT AND MEASUREMENT CHECKS**

[NP] A boat or equipment may be inspected at any time for compliance with the class rules, notice of race and sailing instructions.

## **21. OFFICIAL VESSELS**

Race Committee Start Boat will be a blue Oceanis 40.

**22. [DP] [NP] SUPPORT TEAMS**

As per NoR 16

**23. BERTHING**

[DP] [NP] Boats shall be kept in their assigned places while in the marina.

**24. HAUL-OUT RESTRICTIONS**

[DP] Boats shall not be hauled out during the event except with and according to the terms of prior written permission of the race committee.

**25. DIVING EQUIPMENT AND PLASTIC POOLS**

Underwater breathing apparatus and plastic pools or their equivalent shall not be used around keelboats between the preparatory signal of the first race and the end of the last race of the event.

**26. RISK STATEMENT**

As per NoR 22.

**27. INSURANCE**

As per NoR 23

**28. PRIZES**

As per NoR 24

# ADDENDUM A – Courses: Classes 2 to 4 (Class 4 W/L only)

## Windward – Leeward

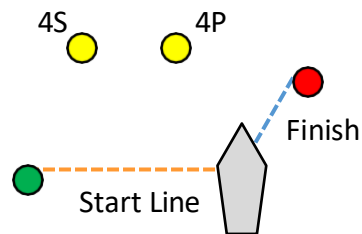
L2 1, 1A, 4P/4S, 1, 1A, 4P, Finish  
 L3 1, 1A, 4P/4S, 1, 1A, 4P/4S, 1, 1A, 4P, Finish

1A   1

Marks 4P/4S are a gate.  
 Marks 1, 1A & 2 & 2A and 4P to be

2A   2

Classes 4 will use marks 2 and 2A instead of 1 and 1A



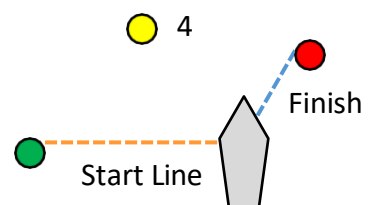
## Triangle

T2 1, 1A, 2, 4, 1, 1A, 4, Finish  
 T 1, 1A, 2, 4, 1, 1A, 4, 1, 1A, 2, 4, Finish  
 3 1, 1A, 2, 4, 1, 1A, 4, 1, 1A, 2, 4, 1, 1A, 4, Finish

1A   1

Marks 1, 1A, 2 and 4 to be rounded to port.

2 



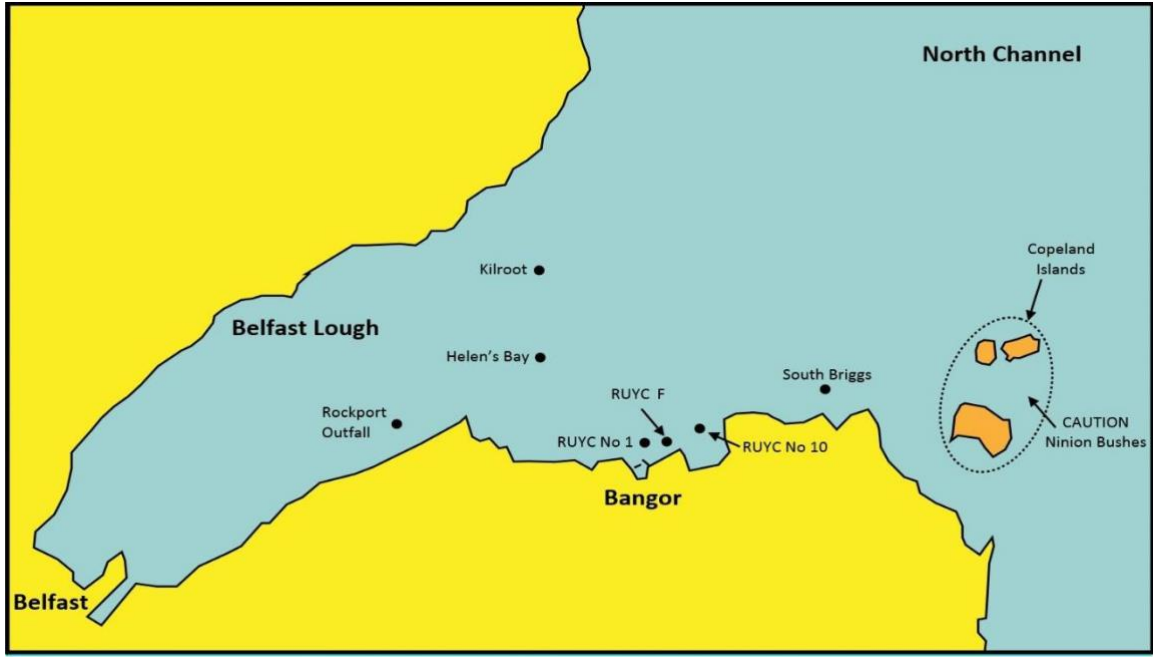
# ADDENDUM B – Coastal Races

The course to be sailed will be indicated by displaying the appropriate number or letter of each mark to be rounded on the side of the committee boat before or at the warning signal. Boards shall be read from left to right for order of rounding. Classes 2 and 3 will use the course boards forward on the start boat and classes 5, and 6 will use the course boards aft on the start boat.

The bearing to the first mark will be displayed on a board at the stern of the committee boat.

The Finish line will be between a white pole with a white diagonal cross at RUYC battery and a Red finishing mark F. Note there are two orange marks in the vicinity of the battery either side of the finish mark F.

Mark designation and name		Approximate Position		Mark type
0	RED laid mark rounded to starboard	Approximately 1 Nm to windward of Start Boat		Red Inflatable
1	RED laid mark rounded to port			
2	RUYC/BYC No 1, rounded to Starboard	54° 40.29' N	5° 40.01' W	Red Inflatable marked 1
3	RUYC/BYC No 1, rounded to Port			
4	Kilroot, rounded to Starboard	54° 42.85' N	5° 42.85' W	Green Navigation Buoy
5	Kilroot, rounded to Port			
6	Helen's Bay, rounded to Starboard	54° 41.86' N	5° 42.85' W	Red Navigation Buoy
7	Helen's Bay, rounded to Port			
8	Rockport Outfall, Rounded to Starboard	54° 40.43' N	5° 45.92' W	Yellow Buoy X top mark
9	Rockport Outfall, Rounded to Port			
L	South Briggs, rounded to Starboard	54° 41.18' N	5° 35.71' W	North Cardinal Buoy
T	South Briggs, rounded to Port			
A	RUYC/BYC No 10, rounded to Starboard	54° 40.42' N	5° 38.92' W	Red Inflatable marked 10
M	RUYC/BYC No 10, rounded to Port			
G	Copeland Islands, rounded to starboard	All three Islands to be rounded: Copeland, Mew & Lighthouse Is. Caution – Ninion Bushes and other hazards.		
R	Copeland Islands, rounded to port			
F	RUYC Finish Line F	54° 40.33' N	5° 39.57' W	Red Inflatable marked F
X	Temporary Mark laid on the day	Position and rounding side to be announced on VHF 72		Yellow Inflatable



Approximate positions of Coastal Race marks - NOT to be used for navigation